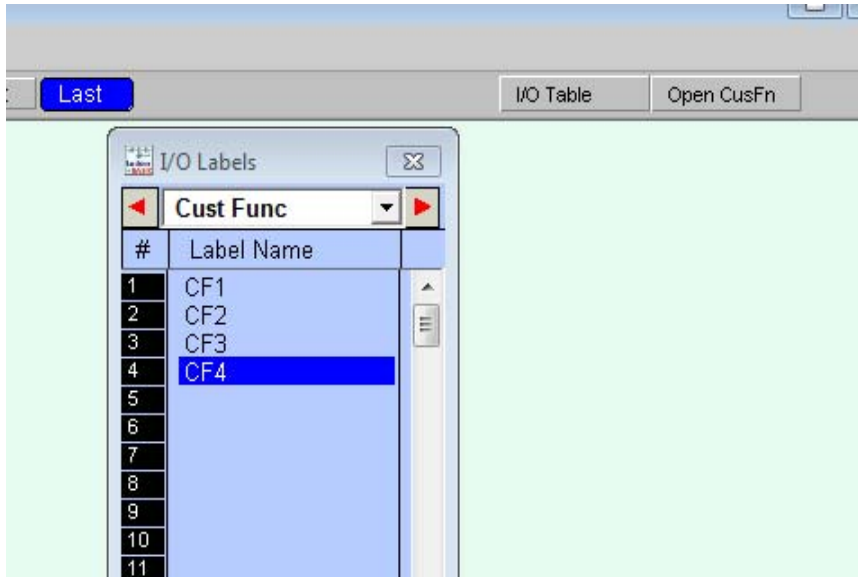
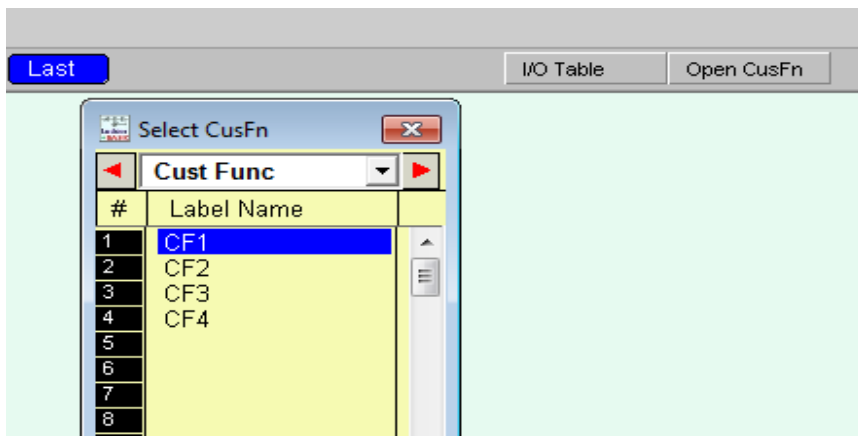


The problem is that the list of I/O Labels for Custom functions is either not maintained in a single place in the program or that when changes are made to this list other copies of this list are not updated.

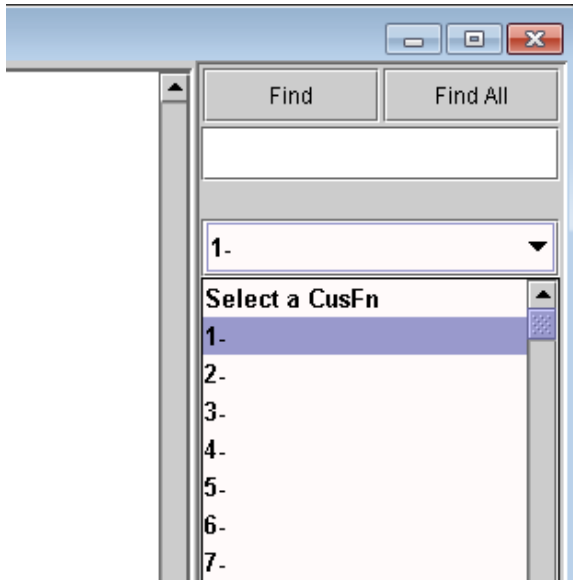
In this instance a new (untitled) .PC6 program is being edited. I go to the I/O Table Menu button to open the I/O Labels menu. I pick the “Cust Func” list and create the following custom function names:



I close the Select CusFn dialog with the Red X button. Now I click on the Open CusFn Menu button. The list of named custom functions looks good.

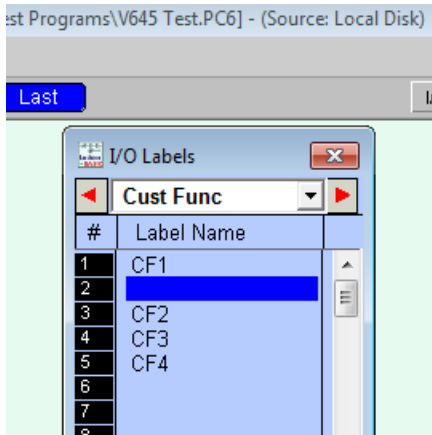


I click on #1, CF1 and the custom function editor window opens. The name in the upper left corner is “Custom Function #1 = CF1”. This is correct. If I go to the right side of the window and click on “<<”, “<”, “>”, “>>”, or the box labeled “1. v” I do not see the names of the custom functions. The following is what I see:

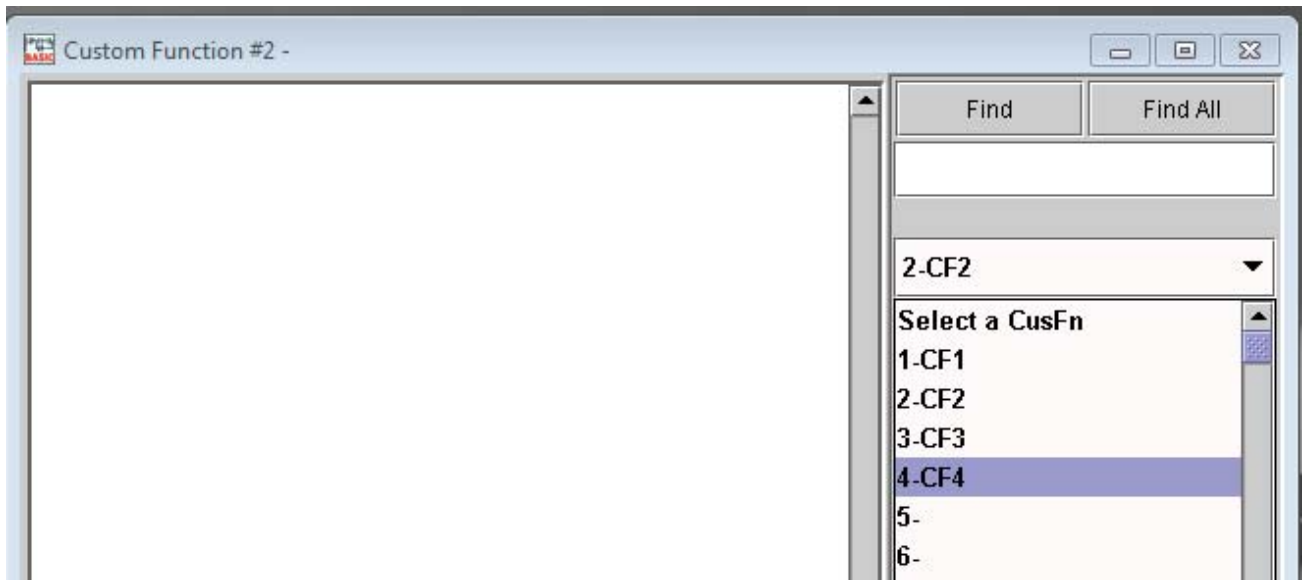


If I save the file and then open the saved file all of the lists of custom file names are correct.

If I now go back to the “I/O Table” menu for the “Cust Fun”, right-click on “#2 CF2” this brings up the Shift I/O window and then click on “Shift I/O Down”. The I/O Labels will now look like this:



If I then Click on the “Open CusFn” , the “Select CusFn” window opens as well as the custom function editor window. The editor window looks like this:



Please notice that the list of functions to edit is incorrect and has not been updated as a result of the “Shift Down”.